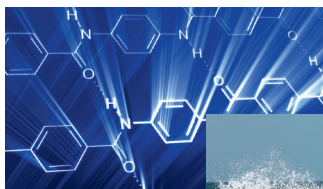


Thermo Scientific ARL EQUINOX 1000

Benchtop X-Ray Diffractometer

The Thermo Scientific™ ARL™ EQUINOX 1000 offers very fast measurements compared to other diffractometers due to our unique EQUINOX curved detector that can measure all diffraction peaks simultaneously across a wide angular range. It will take you just a few minutes on most samples to get a complete analysis regardless of your resolution requirements.



Research



Environment



Geology, Cement,
Mining



Metallurgy



Pharmaceuticals



Education

No scanning required. Measures the whole 2 theta range simultaneously and in real time.

The ARL EQUINOX 1000 is a rugged multi-purpose benchtop style instrument designed for QA/QC, academic and routine X-ray diffraction applications. The ARL EQUINOX 1000 is the perfect instrument when space becomes a priority. With its truly excellent performance it is the perfect match for laboratories that are looking for a simple and powerful benchtop X-ray diffractometer. Several sample holders are available on this instrument such as a 6 or 30 positions sample holder, powder transmission mode sample holders, small thin film sample attachment.

Real time acquisition
Easy to use
No alignment needed

Very reliable
Superb resolution
No maintenance

Specifications

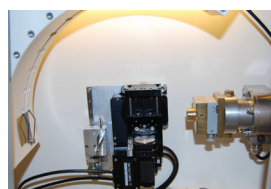
X-ray source	Generator: 3500 W (60kV / 60mA - Option 30kV limitation) Cu, Co - Standard sealed X-ray tube
Detector	Curved Position Sensitive X-ray Detector, CPS 180 Curvature radius: 180mm Acquisition in real time over 110° 2Theta
Goniometric table	No moving parts: acquisition in asymmetric mode
Sample holders	Fixed, with or without sample rotation Reflection or transmission mode Zero background sample cup Sample changer: 6 or 30 positions Thin layer attachment
Optic	Monochromatic (Germanium, Graphite)
Computer	Windows© 8, 7 Vista, XP
Software	Real time diffractogram display Multiple and automatic recording Peak search Deconvolution with several shapes Phase identification and quantification Degree of crystallinity determination Cell parameters, crystallite size, lattice strain Crystal structure analysis Rietveld analysis Free open database for search match Option: ICDD PDF2 or PDF4 databases
Power	30-32A / 208-230V / 50-60Hz
Weight	~90 kg
Cooling water	Flow: ~3,5l/min T°C : ~18 / 25°C
Dimensions	996 mm H x 715 mm D x 750 mm W



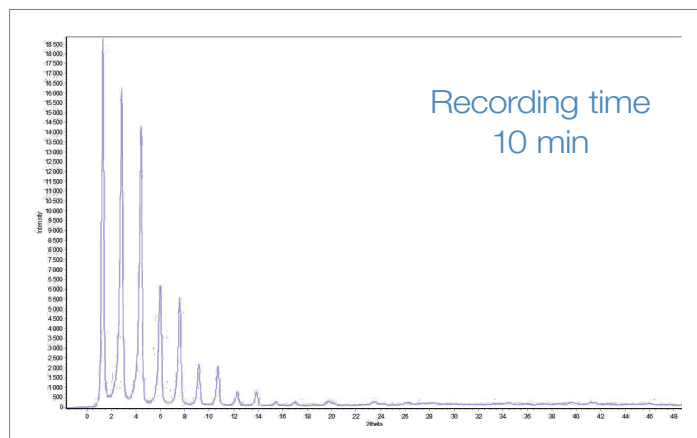
You want to perform transmission analysis? Choose either the Sample Spinner for reflection and transmission analysis on powder samples or the capillary sample holder for Transmission mode analysis depending on your needs.



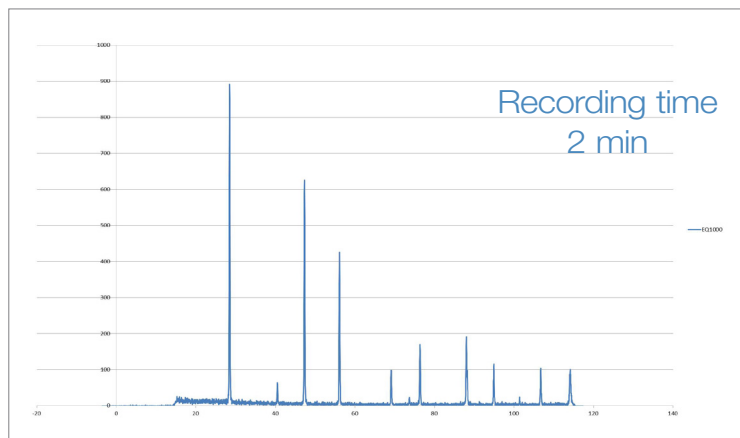
You need to analyze several powder samples a day? Optimize your throughput with the 6 or 30 position sample changer.



You need to perform grazing incidence measurement on small samples? Try our Small Thin Layer analysis attachment.



Silver Behenate powder sample recorded on ARL EQUINOX 1000 in reflection mode.



Si powder sample recorded on ARL EQUINOX 1000 in reflection mode.

www.thermofisher.com/xrd

©2016 Thermo Fisher Scientific Inc. All rights reserved. Microsoft and Windows are registered trademarks of Microsoft Corporation. ISO is a trademark of the International Standards Organization. All other trademarks are the property of Thermo Fisher Scientific and its subsidiaries. Specifications, terms and pricing are subject to change. Not all products are available in all countries. Please consult your local sales representative for details.

Africa +43 1 333 50 34 0
Australia +61 3 9757 4300
Austria +43 810 282 206
Belgium +32 53 73 42 41
Canada +1 800 530 8447
China +86 21 6865 4588

Denmark +45 70 23 62 60
Europe-Other +43 1 333 50 34 0
Finland/Norway/Sweden
+46 8 556 468 00
France +33 2 38 80 45 45
Germany +49 6103 408 1014

India +91 22 6742 9494
Italy +39 02 950 591
Japan +81 45 453 9100
Latin America +1 561 688 8700
Middle East +43 1 333 50 34 0
Netherlands +31 76 579 55 55

New Zealand +64 9 980 6700
Russia/CIS +43 1 333 50 34 0
Spain +34 914 845 965
Switzerland +41 61 716 77 00
UK +44 1442 233555
USA +1 800 532 4752



ThermoFisher
SCIENTIFIC